

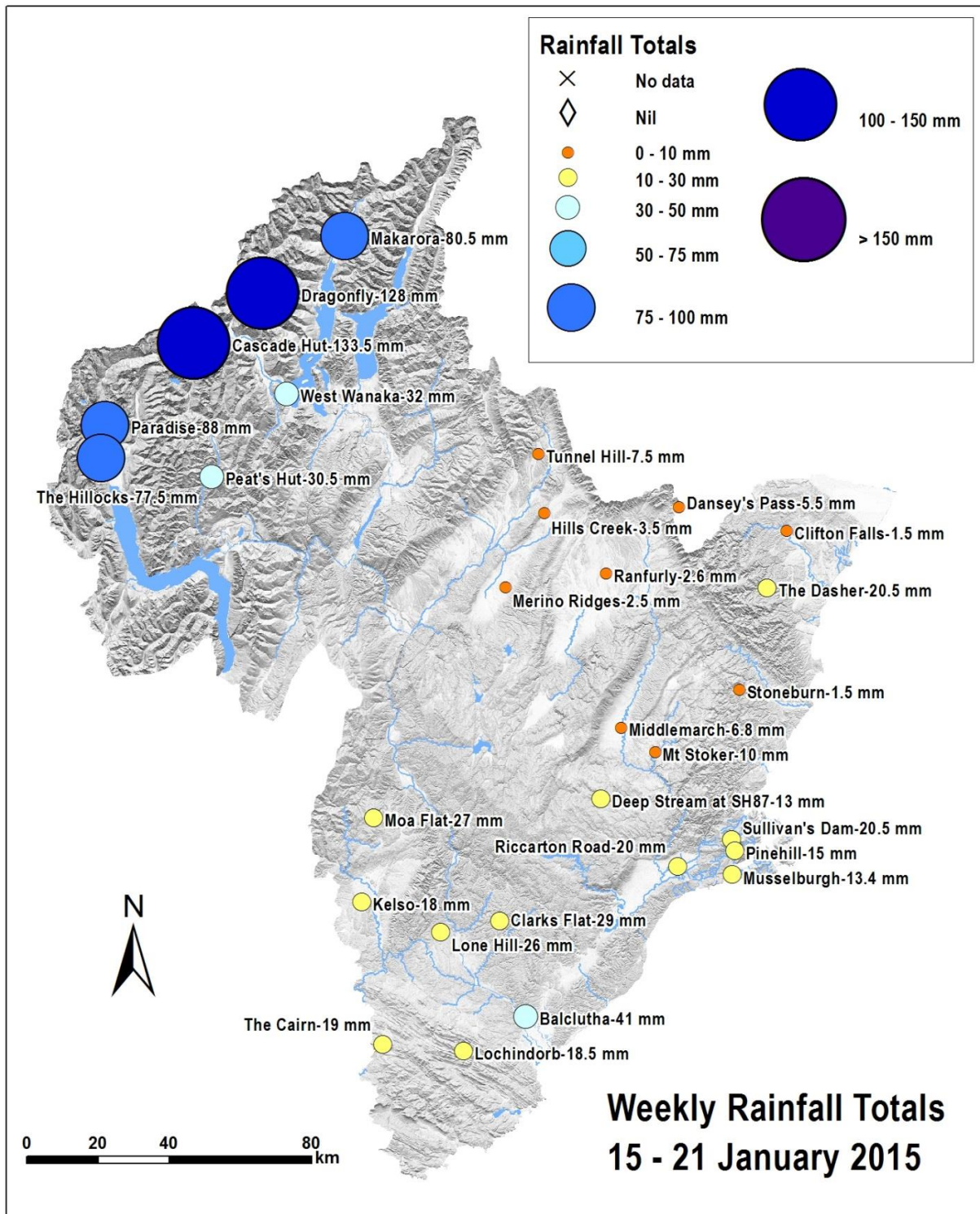
# RAINFALL & RIVER FLOW W E E K L Y R E P O R T O T A G O R E G I O N A L C O U N C I L

**Thursday 15 January 2015 – Wednesday 21 January 2015**

Described below is the weekly rainfall totals recorded at selected rain gauges and the average weekly flow in Otago's main rivers for the week ending at midnight on 21 January 2015.

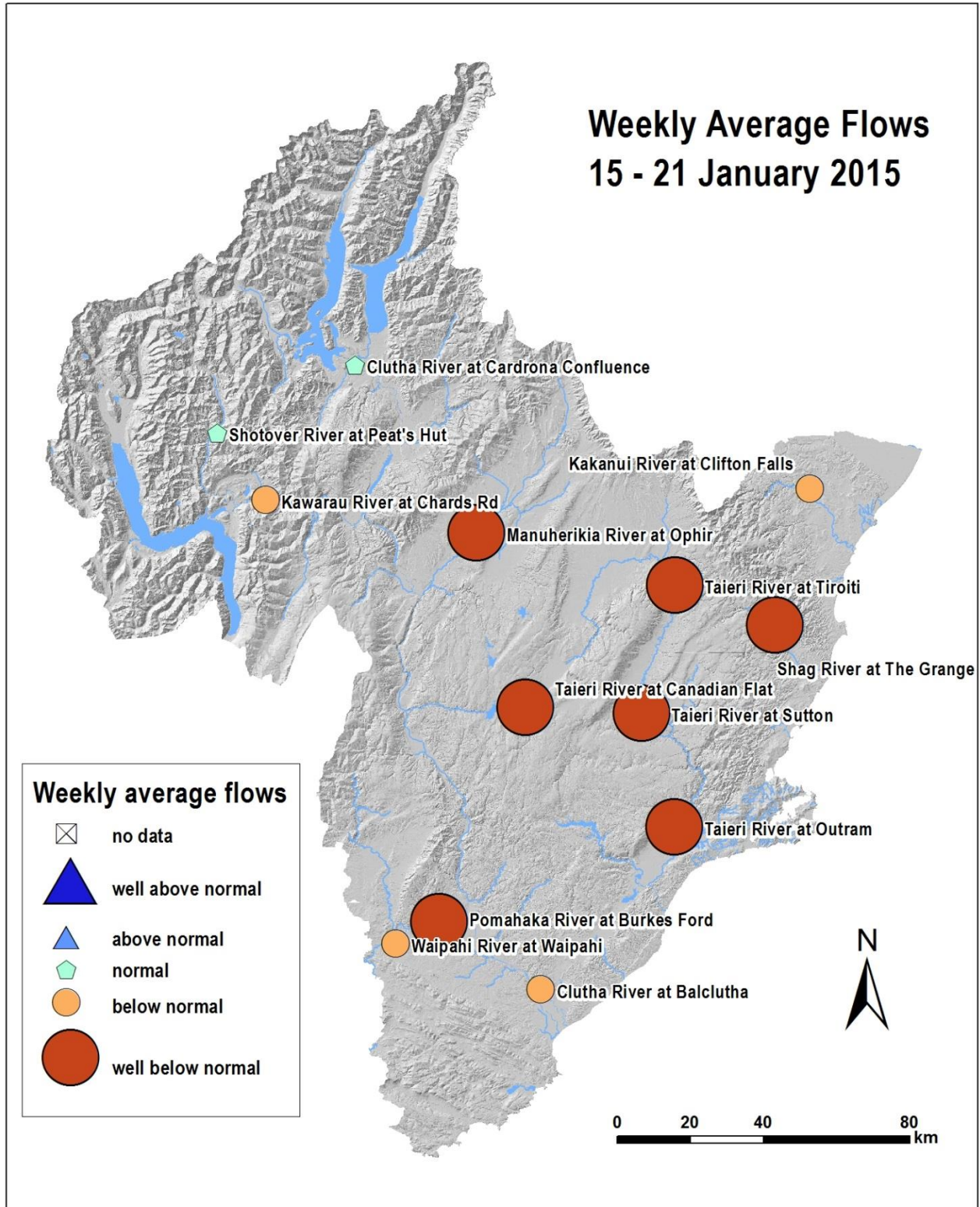
## Rainfall

Much more rainfall was received along the main divide compared to elsewhere in the region. It was quite dry in Central and North Otago. Cascade Hut had the most amount of rainfall, with 133.5 mm recorded. Clifton Falls and Stoneburn both recorded only 1.5 mm.



## River Flows

Most flow recorders had well below normal flows this week. Flows in the Shag River, Manuherikia River, Taieri River, and Pomahaka River were well below normal. The Kakanui River, Kawarau River, Waipahi River, and the Clutha River at Balclutha measured below normal flows.



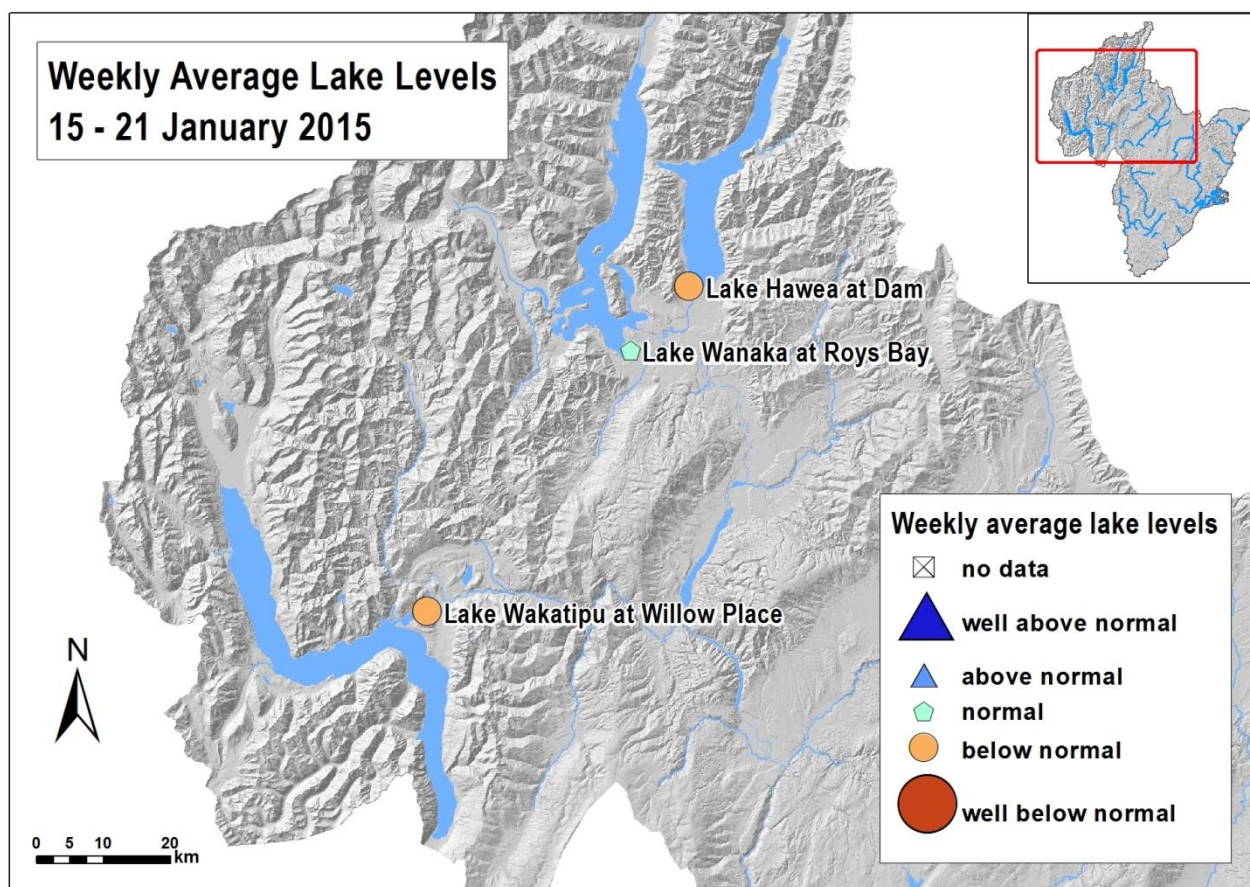


**Table 1. River flow information for Otago's main rivers (all flows in cumecs, m<sup>3</sup>/s)**

River and Site Name	Weekly Average	Minimum	Maximum	State
Kakanui River at Clifton Falls	0.526	0.432	0.681	below normal
Shag River at The Grange	0.059	0.044	0.083	well below normal
Taieri River at Canadian Flat	0.880	0.623	2.293	well below normal
Taieri River at Tiroiti	1.048	0.917	1.161	well below normal
Taieri River at Sutton	1.078	0.961	1.180	well below normal
Taieri River at Outram	2.494	2.017	3.994	well below normal
Clutha River at Balclutha	494.530	327.854	705.428	below normal
Waipahi River at Waipahi	0.745	0.518	1.110	below normal
Pomahaka River at Burkes Ford	3.949	3.068	6.196	well below normal
Manuherikia River at Ophir	1.723	1.497	2.036	well below normal
Clutha R. at Cardrona Confluence	265.310	236.734	323.437	normal
Kawarau River at Chards Rd	210.025	176.107	267.464	below normal
Shotover River at Peat's Hut	21.645	12.677	59.665	normal

### Lake Levels

Water levels in Lake Hawea and Lake Wakatipu were both below normal for this time of year. Lake Wanaka had normal water levels.

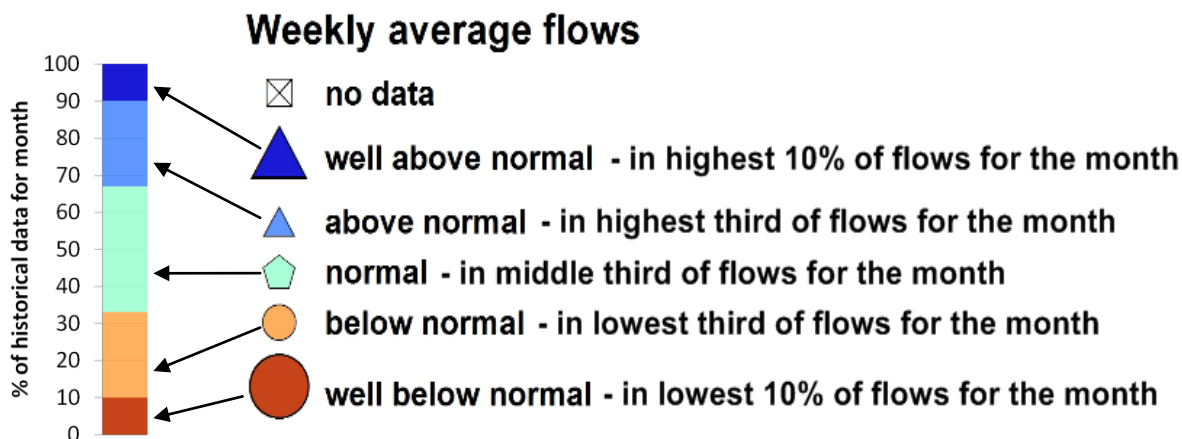


**Table 2. Lake Levels information for Otago’s main Lakes (all levels in metres, m)**

Site Name	Weekly Average	Minimum	Maximum	State
Lake Wanaka at Roys Bay	277.365	277.177	277.56	normal
Lake Hawea at Dam <sup>1</sup>	343.051	343.005	343.094	below normal
Lake Wakatipu at Willow Place	309.91	309.791	310.043	below normal

**Weekly average flow/lake level classes**

To give a better representation of how the weekly average flows and lake levels compares to our historical records, we use flow/lake level classes. Take the average flow class as an example, if a flow falls in the middle third of the historical flow recorded for that month we’ve called it a “normal” flow. If it falls in the top third of flows we call it “above normal” and likewise if in the bottom third, then “below normal”. If it is in the top or bottom 10% of flows then we change this to “well above” or “well below”, respectively. The divisions of flow are somewhat arbitrary but they do give a better indication of the state of the river than was previously reported. We use the word “normal” because using “average” for both the weekly flow and the historical average flow can be confusing and we’ve used it descriptively not definitively.



**Acknowledgement**

Information for this report is provided by the Otago Regional Council, National Institute of Water & Atmospheric Research Ltd, Environment Canterbury and Trustpower Limited.

**Further Information**

For more information on rainfall and river flows in the Otago Region use the Water Info flow phone and website service. Tel:0800 426 463 or go to [www.orc.govt.nz/waterinfo](http://www.orc.govt.nz/waterinfo)  
 To request flow or rainfall data email [environmental.info@orc.govt.nz](mailto:environmental.info@orc.govt.nz)

**Mailing list**

This report is available online or by email. To update your contact details on our mailing lists, please email: [environmental.info@orc.govt.nz](mailto:environmental.info@orc.govt.nz), or tel: 0800 474 082.

Otago Regional Council, 70 Stafford Street, Private Bag 1954, Dunedin.  
 Phone: (03) 474 0827, Fax: (03) 479 0015, Website: [www.orc.govt.nz](http://www.orc.govt.nz)

<sup>1</sup> Fluctuations in Lake Hawea’s water level are due to the regulation of outflows, i.e., the water levels are not naturalised.